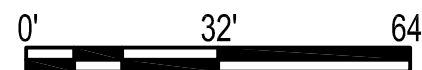
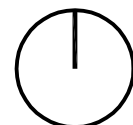
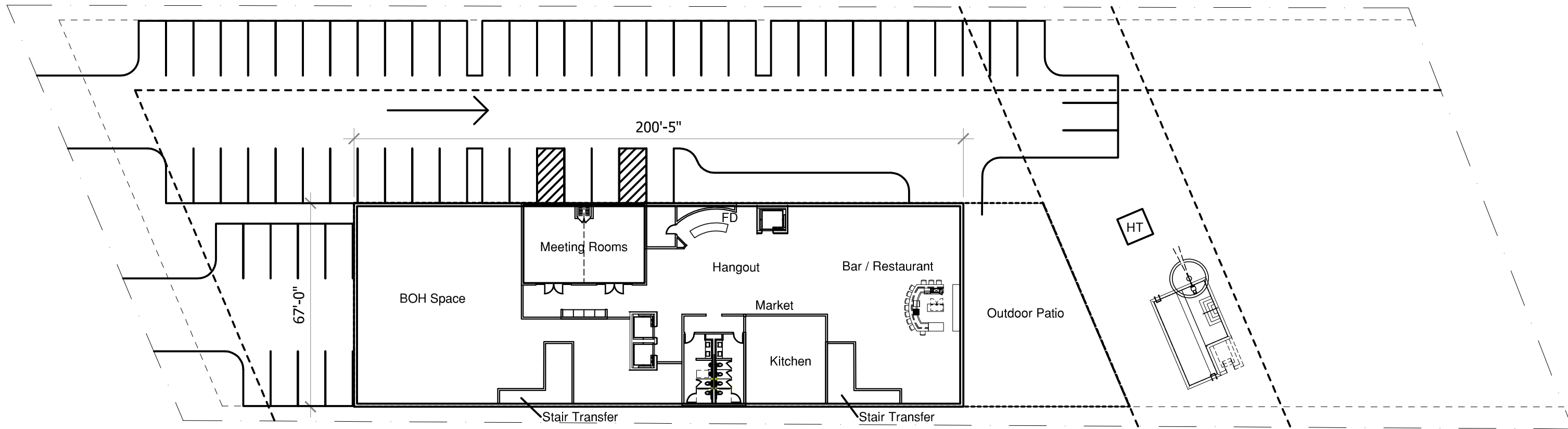


CONFIDENTIAL AND PROPRIETARY TO CHOICE HOTELS INTERNATIONAL

NOTE: THESE DRAWINGS ARE CONCEPTUAL IN NATURE, BASED ON THE LIMITED INFORMATION PROVIDED. ADDITIONAL ANALYSIS MUST BE DONE, INCLUDING, BUT NOT LIMITED TO: PLANNING, ZONING, STRUCTURAL, ENVIRONMENTAL, GEO-THERMAL, AND CIVIC ENGINEERING.

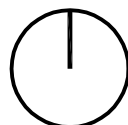
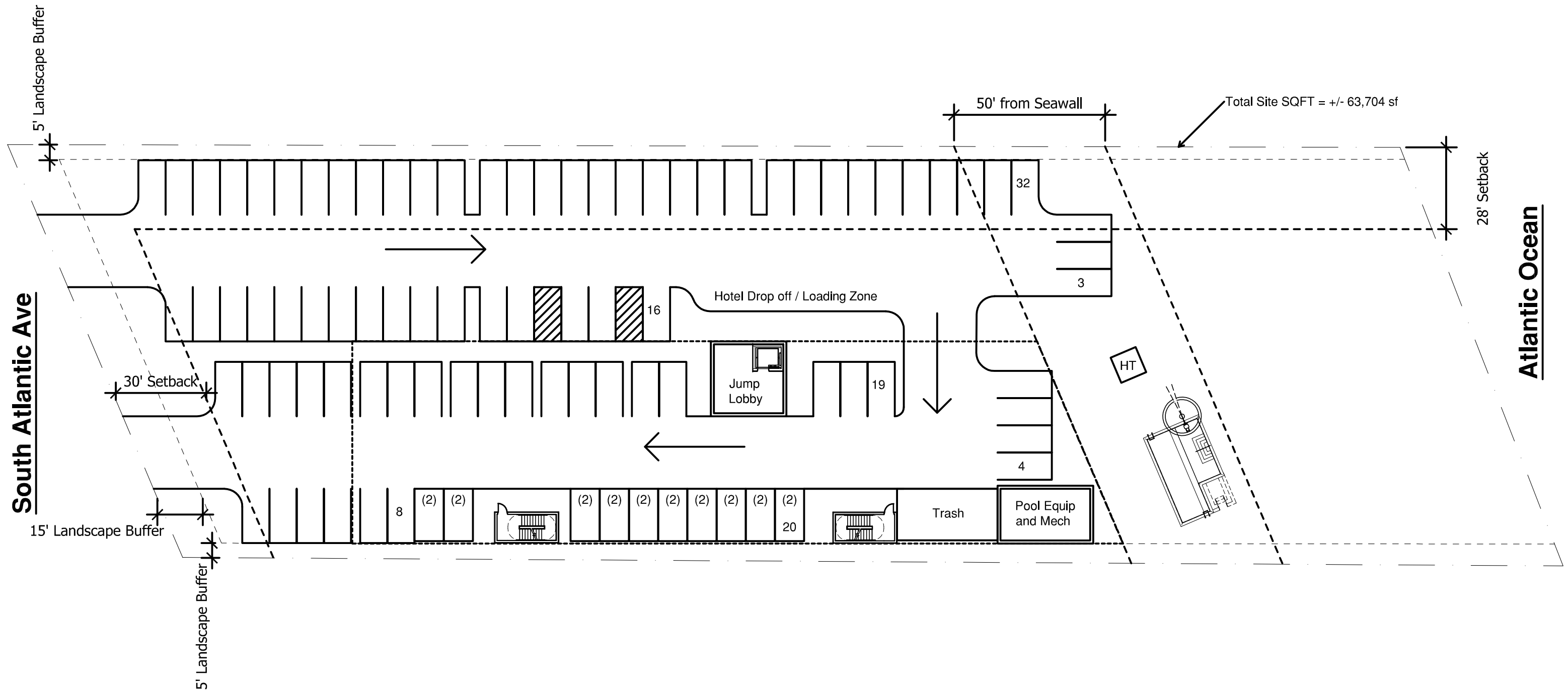
2nd Floor Plan



CONFIDENTIAL AND PROPRIETARY TO CHOICE HOTELS INTERNATIONAL

NOTE: THESE DRAWINGS ARE CONCEPTUAL IN NATURE, BASED ON THE LIMITED INFORMATION PROVIDED. ADDITIONAL ANALYSIS MUST BE DONE, INCLUDING, BUT NOT LIMITED TO: PLANNING, ZONING, STRUCTURAL, ENVIRONMENTAL, GEO-THERMAL, AND CIVIC ENGINEERING.

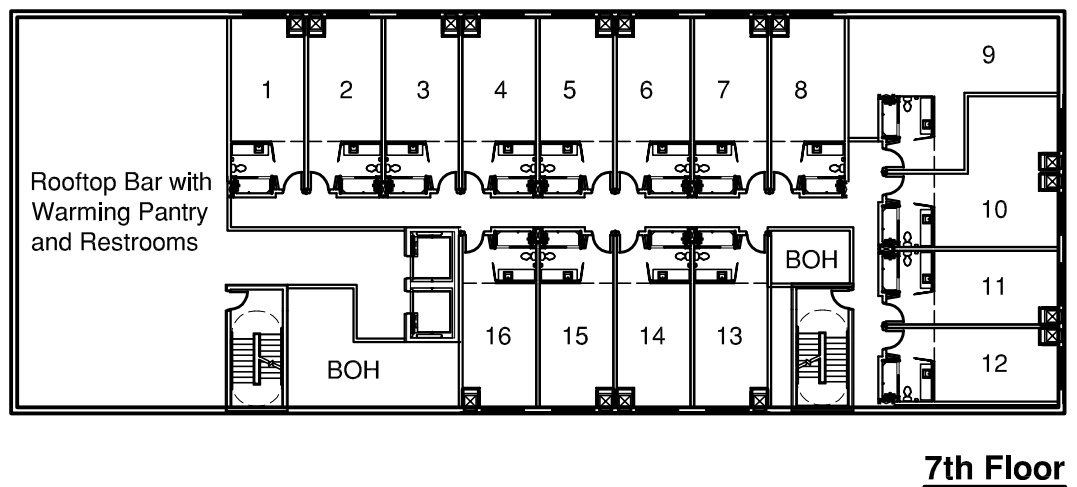
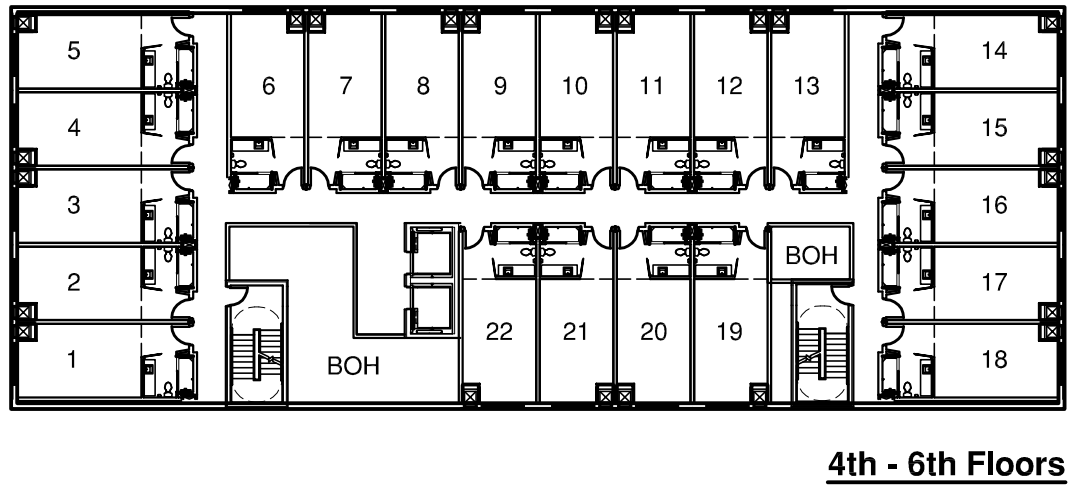
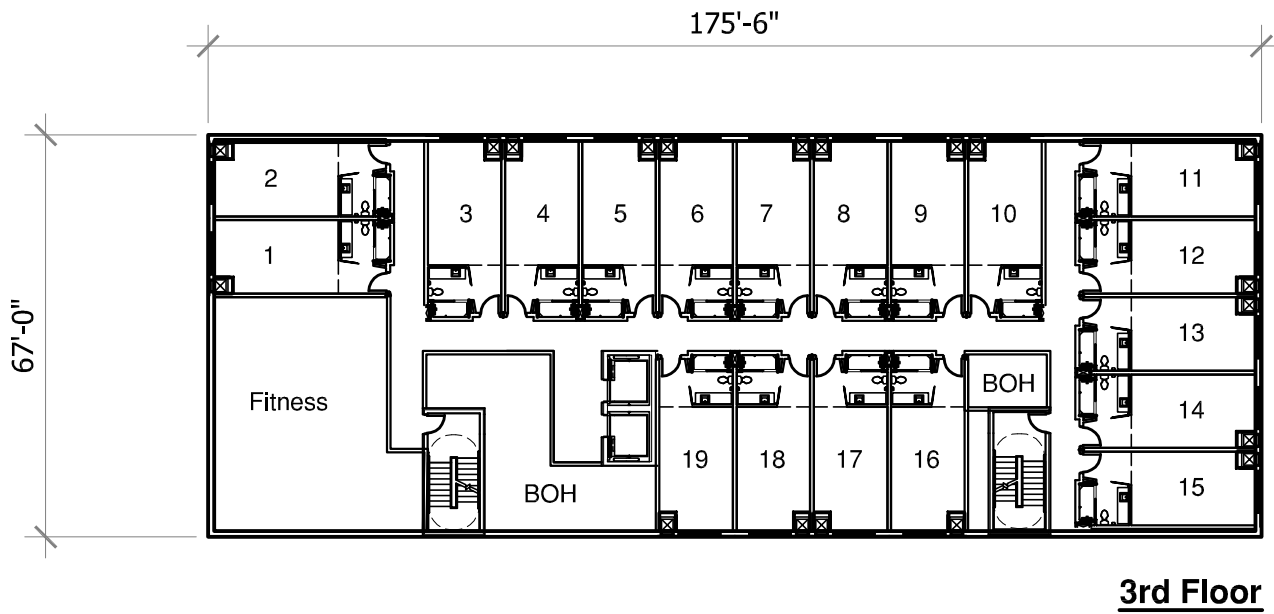
Ground Floor Plan



Guestroom Floor Plans

CONFIDENTIAL AND PROPRIETARY TO CHOICE HOTELS INTERNATIONAL

NOTE: THESE DRAWINGS ARE CONCEPTUAL IN NATURE, BASED ON THE LIMITED INFORMATION PROVIDED. ADDITIONAL ANALYSIS MUST BE DONE, INCLUDING, BUT NOT LIMITED TO: PLANNING, ZONING, STRUCTURAL, ENVIRONMENTAL, GEO-THERMAL, AND CIVIC ENGINEERING.



HOTEL ONLY SITE PROGRAM

TOTAL # OF FLOORS	7	
TOTAL SQ. FEET	± 70,659	SF
KEYS	101 Keys (2 Suites)	
PARKING	102 Spaces (10 double stackers)	

HOTEL BUILDING PROGRAM

GROUND FLOOR (JUMP LOBBY)	± 1368	SF
2ND FLOOR (LOBBY)	± 12,896	SF
MEETING ROOM	± 1,024	SF
3RD FLOOR	± 11,279	SF
FITNESS	± 1,202	SF
KEYS	19 KEYS (0 SUITES)	
5TH TO 6TH FLOORS	± 33,837	SF
# OF FLOORS	3	
TYP. FLOOR	± 11,279	SF
KEYS PER FLOOR	22 KEYS (0 SUITES)	
7TH FLOOR	± 11,279	SF
KEYS	16 KEYS (2 SUITES)	
HOTEL ONLY TOTAL	± 70,659	SF

